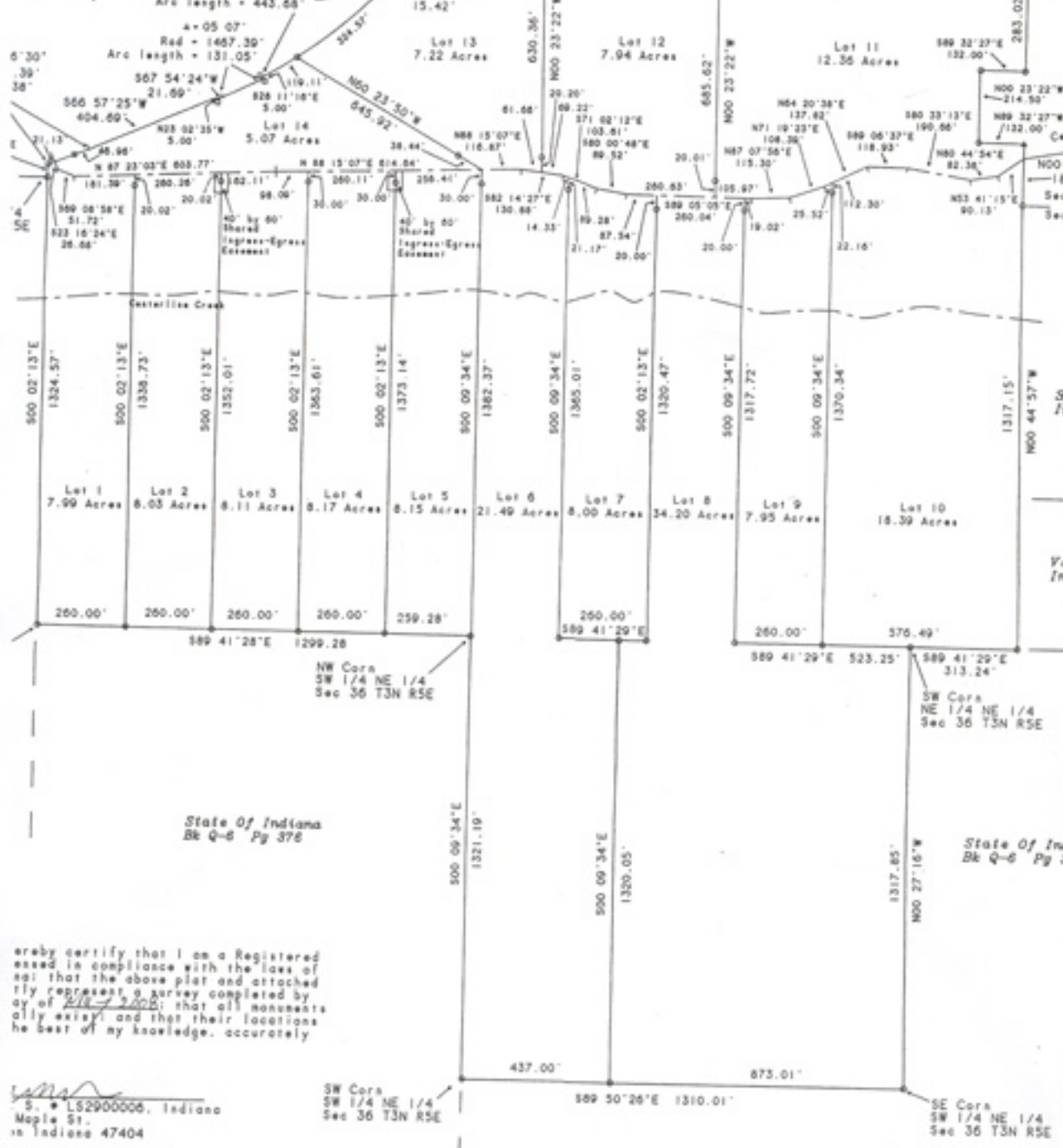




5/8" Iron Pin at Unexcavated Mass and 5/8" Iron Pin crate S-O-W Mass Railroad Spike



we hereby certify that I am a Registered Surveyor and that the above plat and attached map truly represent a survey completed by me or under my supervision and that all monuments fully exist and their locations are as shown to the best of my knowledge, accurately.

*[Signature]*  
S. S. LS2900000, Indiana  
Maple St.  
Indianapolis, Indiana 47404

SW Corn  
SW 1/4 NE 1/4  
Sec 36 T3N R5E

SE Corn  
SW 1/4 NE 1/4  
Sec 36 T3N R5E